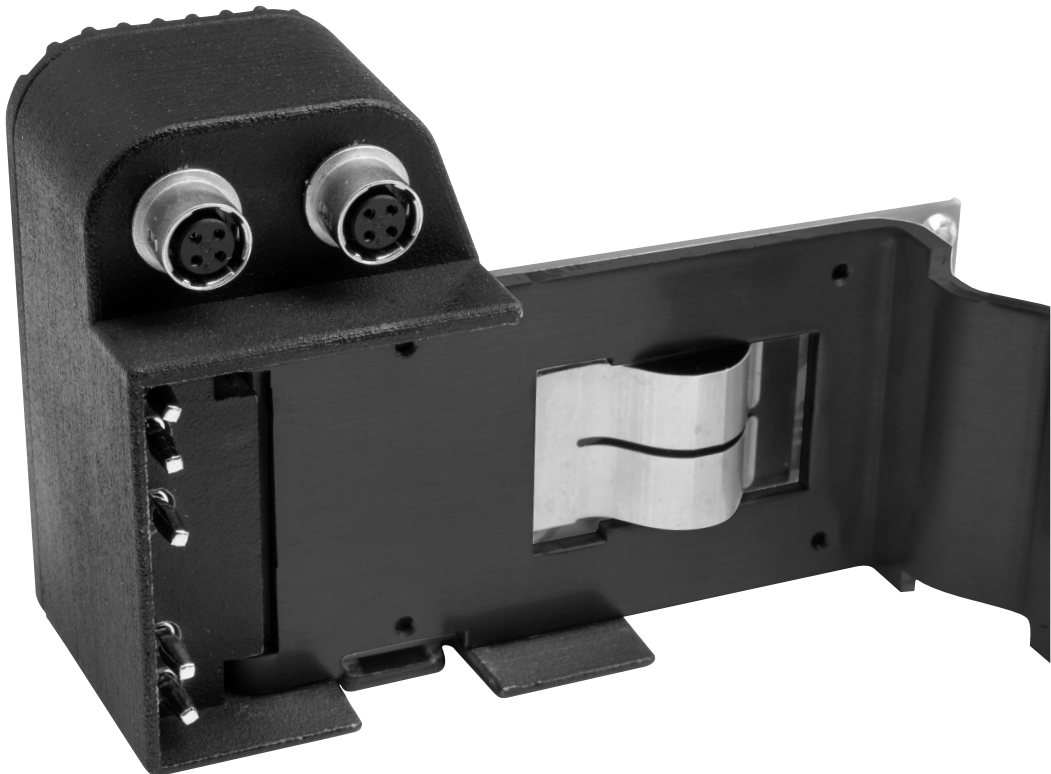


*Coco*

bebob

## OPERATION INSTRUCTION

Coco-Ex for Sony PMW-EX1 Camcorder



# TABLE OF CONTENTS

I. Safety Guidelines .....	3
II. Coco-Ex Features .....	4
III. Initial Use and Operation .....	5
IV. Cleaning, Maintenance, and Care .....	7
V. Available Accessories .....	8
VI. Technical Data .....	8
VII. Warranty Information .....	8

**We would ask that you please read the operating instructions in their entirety before operating the device in order to take full advantage of all system functions.**



Before using this product with your camera, please note the following general safety information.

All persons installing, operating or servicing this product should familiarize themselves with the following information:

- It is mandatory to follow the instructions in this manual.
- All users must be trained to work with this product.
- The operation instructions form part of the product and should be handed over to any future owner in the event of sale/transfer of the product.
- This manual should be retained for the life of the product.
- If you have any questions about this product, please ask only authorized specialist personnel for advice.
- Subsequent updates should be kept with this manual.

Please note the following:

- **Use the device according to the specification only [see Technical specification].**
- **Do not bypass connections.**
- **The casing may become hot. Caution: possible danger of burning!**
- **To avoid damage, allow the light to cool before packing it away.**
- **Damaged cables must be replaced immediately by an authorized service provider.**
- **Treat this product with care. Do not throw it or allow it to fall!**
- **Do not immerse the system in water!**

If you disregard this information, the system or your camera may incur damage!

## COCO-EX FEATURES

The Coco-Ex adapter has been developed to supply power to additional accessories on the PMW-EX1 with new BP-U60 batteries.

Coco-Ex acts as an adapter between the battery and the camera and its accessories. It is attached to the camera in place of the battery, with the battery itself then mounted on the Coco-Ex. The adapter includes two Hirose connectors and an Anton Bauer Twist D-Tap, each with 14.4 V outputs for the BP-U60 battery to supply a camera light or external LCD monitor. The matching plug is a regular D-Tap that can be mounted in both directions with the cable facing either up or down.

It is particularly suitable for connection to the Lux-Led-dv camera light. Like all bebob accessories, the new adapter comes with a five-year warranty.



### Coco-Ex features:

- For Sony PMW-EX1
- Only for Sony BP-U60 battery use
- 2 Hirose Output 14,4V / 4W max
- AB-Tap 14,4V Output

### Contents of delivery:

- Coco Ex
- Operation instruction

Unpack the delivered parts and check that contents are all present.

## Connection to the camera:

The bebob Coco-converter is mounted on the camera in place of the battery. Put the converter into the battery receptacle and push it to the left till it is fastened.



Put the BP-U60 battery (backwards) in the same way into the battery receptacle



Pull the moving part of the Coco-Ex over the battery until it is attached to the battery connectors.

Both batteries should be in good condition and fully charged or at least be recharged to equal capacity. The battery power supports the camera and the additional equipment connected to the Coco-Ex in parallel. There are two Hirose 4 pin and a Twist D-Tap AB 14,4V Output available.

To remove the Coco-Ex please proceed in the reverse way and push the button to disconnect the battery.

Note: Coco-Ex is developed for the exceptional use with the Sony BP-U60 Battery.

### Connecting Accessories

Accessories [Headlamp, LCD Monitor, audio...] can generally be connected to the Hirose or the AB Twist D-Tap if they are turned off.



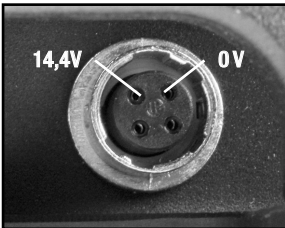
#### 14.4V Anton Bauer D-Tap-Jack for connecting camera accessories

Accessories can be connected with a two-pole Anton Bauer plug over the D-Tap Twist-Technology which allows the plug to be connected in both directions. In this way the cable direction can be chosen and the poling is retained.



### Jacks for connecting additional camera accessories

Two Hirose 4-pin jacks with 14,4V are available with a total power supply of 4W. These jacks accommodate a camera and standard accessories such as audio transmitters or receivers.



## CLEANING, MAINTENANCE, AND CARE

**All system parts require zero maintenance**

**The casing must not be opened!**

A dry, lint-free cloth is recommended for cleaning.

Do not use any cleaning agents

Damaged cables must be replaced immediately by an authorized service provider.

## AVAILABLE ACCESSORIES

Lux-Led-dv Camera On-board Daylight w/ dimmer [MiniHD Camcorder recommended]

Lux-Led- Camera On-board Daylight w/ dimmer [for Shoulder Camcorder recommended]

Lux-DV Camera On-board Light Tungsten

Lux – Camera On-board Light Tungsten w/ dimmer

D-tap-Lux cable in different lengths available

## TECHNICAL DATA

Output	1* AB Twist D-Tap 14,4V *
	2* - Hirose 4pol [max. 4W*]
Ambient Temperature	- 40° bis +60°
Weight	apprx. 150g

\* Dependant on charge and overall condition of battery of BP-U60 battery Subject to technical changes

## WARRANTY INFORMATION

Damage caused by disregarding these operating instructions, incorrect usage, handling, or external intervention will result in a forfeiting of all warranty claims. We do not accept any liability for material damage or personal injury caused by incorrect usage. We are not liable for any resulting damage. Arbitrary rebuilding of and/or changes to the light are not allowed for safety and conformity reasons (CE). In this case all warranty revised

Stand 12/07

© bebob GmbH 2007